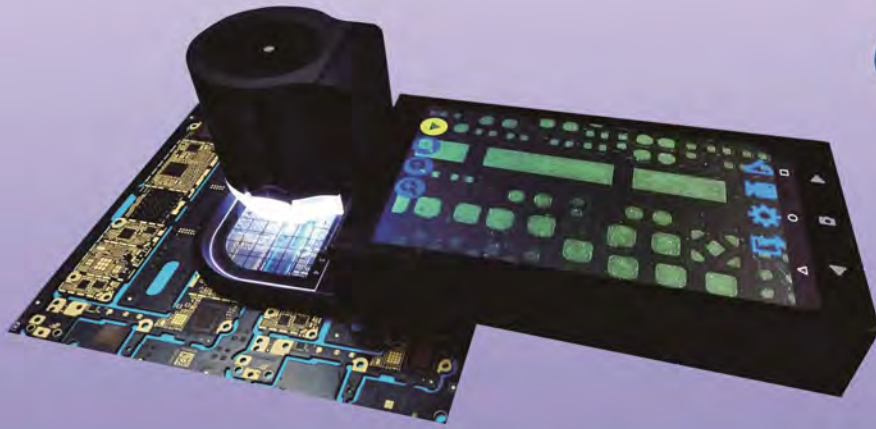


Make Observations More INTERESTING and EASIER by **Vfine'S Microscope**



VFINE

便携式显微镜 Vfine MS-R200
Digital Microscope Vfine MS-R200

测量质检/方便快捷

Measuring and quality inspection: efficient and convenient

一体化设计、精确测量、远程诊断
Integrated design, accurate measurement, remote diagnosis



一键存储分享数据

One-click for data storage and sharing

8G存储空间、wifi、蓝牙无线传输

8G storage capacity, wifi & Bluetooth transmission



三种倍率全自动聚焦

Three types of magnification with automatic focusing

5X 60X 200X放大倍率

5X 60X and 200X magnification



技术参数 Technical Parameters:

传感器: Sensor	COMS 130万像素彩色 COMS 1.3 megapixel color	存储空间: Storage	8GB 8GB
放大倍率: Magnification	支持约5-200倍 (对应17英寸屏幕) Support about 5-200 times (corresponding to 17-inch screen)	图像尺寸: Image Size	1280X720像素 1280X720Pixel
屏幕: Screen	720P高清液晶触摸屏 720P HD LCD touch screen	仪器尺寸: Instrument Size	185*70*55mm(长宽高) 185*72*55mm(Long Wide high)
电池容量: Battery Capacity	3200mAh 3200mAh	数据接口: Data Interface	Micro USB2.0、HDM Micro USB2.0、HDM
电池消耗: Battery Consumption	连续拍摄工作2小时 Continuous shooting for 2hours	网络接口: Network Interface	WIFI WIFI
操作系统: Operating System	安卓5.0 Android 5.0	操作温度: Operating Temperature	5-35度 5-35degrees
数位变焦 Digital Zoom	2位 2digits	储存温度: Storage Temperature	-20度----+50度 -20degrees----+50degrees
机身重量: Weight	约300g Around300g	机身内存: Memory	2GB ROM 2GB ROM
图像格式: Image format	BMP BMP	照明光源: Illumination source	高亮度白光 LED*8 High bright white light LED*8

应用领域: SMT, 半导体, 印刷, 文教, 其它

Application: SMT, Semiconductor, Printing, Culture and Education, Other



精准内置测量工具

Precise built-in measurement tools

网点比例、网线、直线、角度、圆面积、多边形面积、点到线、网点直径测量
Dot ratio, mesh, line, angle, circle area, polygon area, point to line, dot diameter measurement



样机免费试用服务
Free trial service for prototype

制造者
威凡化学(上海)有限公司
SWF CO, LTD

地址: 上海市奉贤区联合北路215号第5幢1582室
电话: +86-15000559447
邮箱: info@swfchem.com
网址: www.swfchem.com



贩卖总代理
上海仁发商贸有限公司
SRF CO, LTD

地址: 上海市闵行区银都路466弄23号805室
电话: +86-21-56309239/+86-18621581273
邮箱: info@srfsh.cn
网址: www.srfsh.cn

